



# Enterprise Services Portfolio

[gbiinc.com](http://gbiinc.com)



Telecom  
Solutions

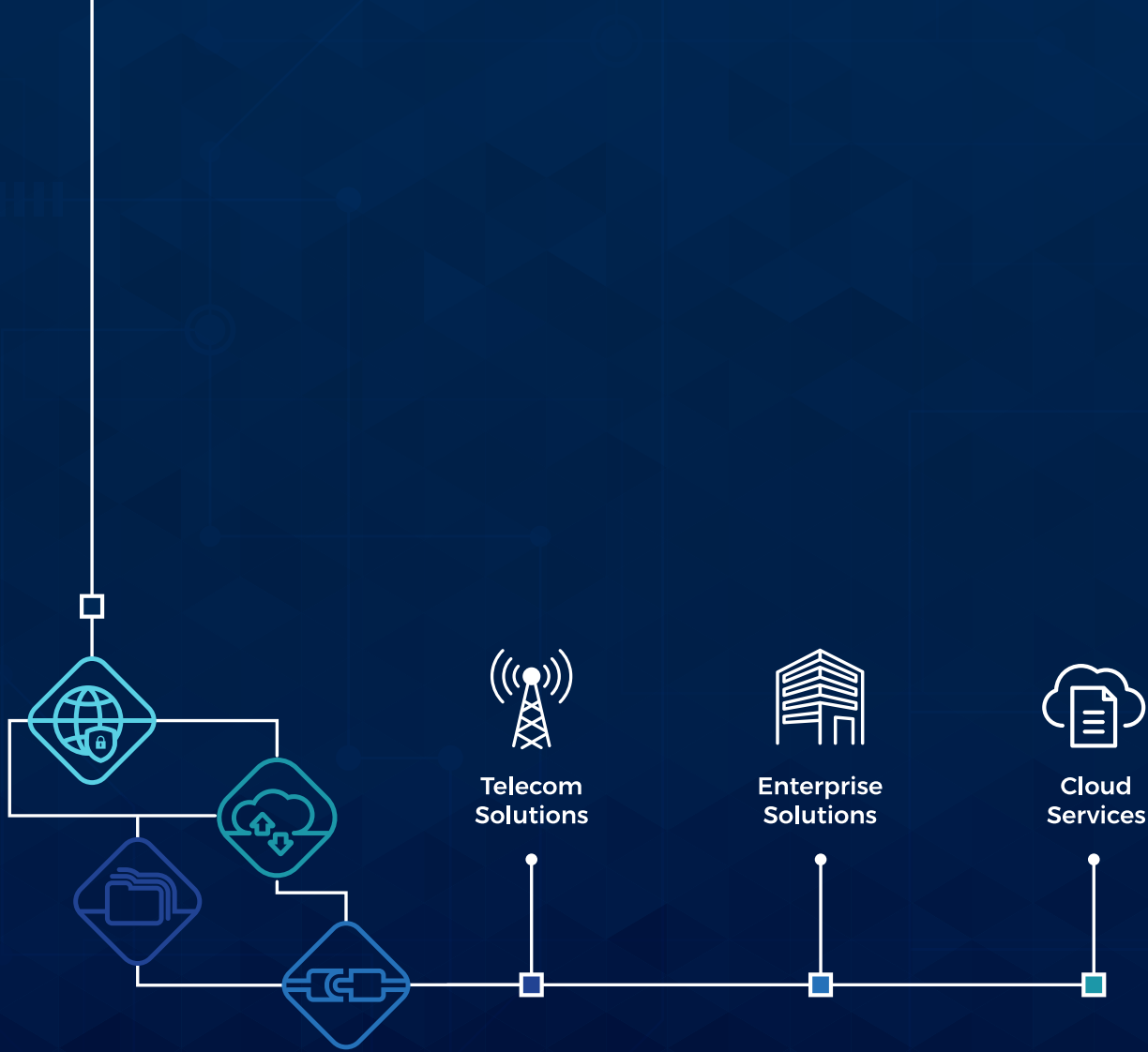


Enterprise  
Solutions



Cloud  
Services





# Enterprise Services Portfolio

[gbiinc.com](http://gbiinc.com)

# Table of Contents

01  
About  
GBI

02  
GBI  
Services

03  
Professional  
Services

## About GBI



- Winner of the 2016 Telecom Company of the Year
- Best Middle Eastern Wholesale Carrier
- and Best Submarine Cable Operator



Smart and agile network solutions for Carriers and Enterprise clients

- Operating across Asia, Middle East and Europe
- Integrated subsea and terrestrial network
- Diversity of routes linking the East to the West
- 24x7 NOC with backup

- Restorable services using ring within the Gulf
- 40,000+ KM network length
- 60+ engaged Partners & Suppliers
- 99.9% Availability for IP/MPLS Services
- The major Middle East carrier neutral network

# GBI Services

## Managed Connectivity Services

- Global VPN Services
- Cloud-Connect Services
- IX-Connect Services
- Content-Connect Services
- Managed Hosting Services

## Professional Services

- Firewall Assurance Management Services (FAMS)
- Security Consultancy Services
- Network Consultancy Services
- Vulnerability Assessment & Penetration Testing (VAPT)



# Managed Connectivity Services



## Global VPNs Services

Hybrid connectivity solutions across corporate offices regionally/globally and major cloud platforms based on GBI SD-WAN or traditional MPLS solutions with 24/7 CPE Management and network monitoring.



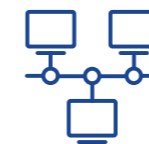
## Managed Hosting Services

A quickly scalable managed hosting solution, bundling Tier 3 certified data center hosting facilities in the GCC and Europe with GBI IP, connectivity services enable enterprises to have access to hassle free presence in GBI shared facilities from 1 rack unit to multiple racks and 24x7 monitoring and FLM support.



## Cloud-Connect Services

Reach to major cloud platforms globally via private Ethernet connection ensures consistent and ultra secure connectivity for organizations in order to assist them in their digital transformation journey. GBI leverages on it's resilient low latency connectivity to cloud platforms in Europe, GCC, in addition to Singapore and advanced SD-WAN and MPLS platforms to fulfill requirements.



## IX-Connect Services

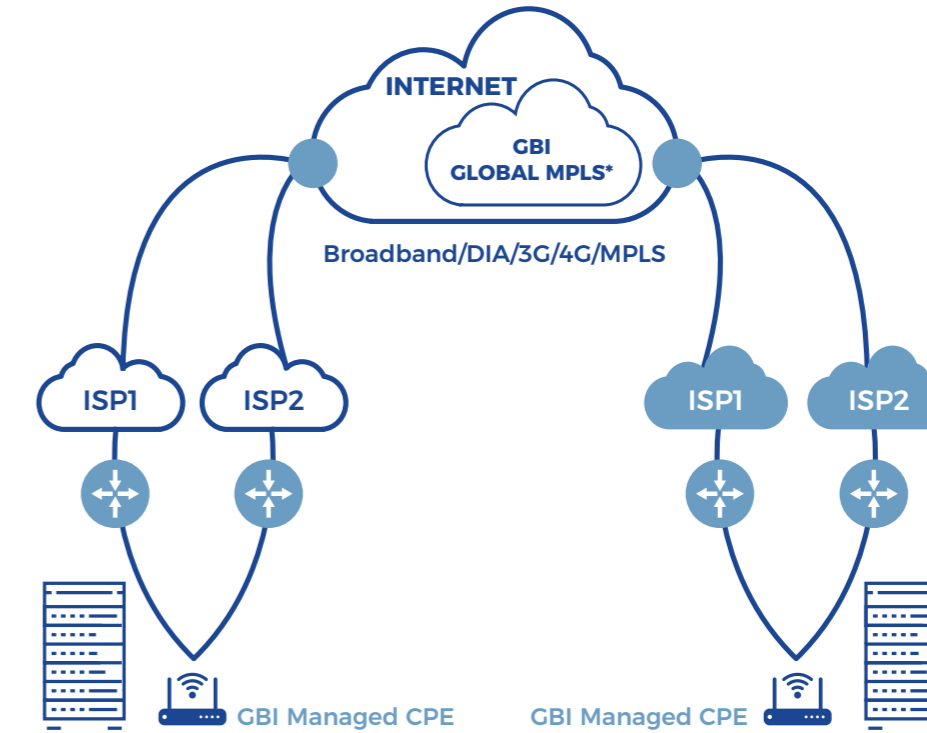
Presence in major internet exchange(s) worldwide would require massive investment that consumes time and resources to be dedicated to building a protected global network and POPs at desired IXs. GBI Point-to-Multipoint IX-Connect enables ISPs and customers who need presence at any desired IXs to have hassle-free networking and a virtual POP as fully managed service.



## Content-Connect Services

Remote peering with major content providers leveraging GBI Capacity services inclusive of all required patching and cross connections as a managed connectivity service (E.g. Facebook, Youtube, etc.).

# Global VPNs



## Challenges

- To interconnect global branch offices with consistent and reliable connectivity
- Secured global connectivity without risk from volumetric attacks to in on global internet
- Application driven service to ensure quality for mission critical application
- Resilient and stable latency for global connectivity

## GBI Solution Benefits

- Global SD-WAN solution with full monitoring and management per branch and circuit
- Hybrid VPN that allows enterprises to leverage on existing Internet in the last mile which is converted to MPLS at the closest GBI POPs to customer
- Leveraging on unique low latency route between GCC and Europe (approx. 110ms latency)

\*GBI is able to provide Global VPN on "Internet Only" basis

## EZWAN Features

Single and Dual Internet/MPLS WAN Links / Managed CPE based on Throughput up to 1000mbps / Internet local breakout / Bonded Internet and MPLS uplinks / Portal and Network Monitoring / Application awareness Routing / Application Monitoring / Security monitoring / L3-L7 QoS / Any to Any Topology / L3 VPNs / SLA For latency and packet delivery

# Cloud Connect



## GBI Provides

A secure, scalable and affordable managed international connection from your local server to the cloud

Stringent SLAs for both latency and availability

Partnerships with the major global cloud platforms



### Simple, Safe and Reliable

A single cross connect into your server and you have a secure connection to the Cloud.



### We Care about Your Service

GBI provides 24/7 ongoing support, LOCAL CPE management and optimization of routing into the Cloud.



### Rapid Deployment of Your Service

Shorter lead times compared to traditional connectivity services.



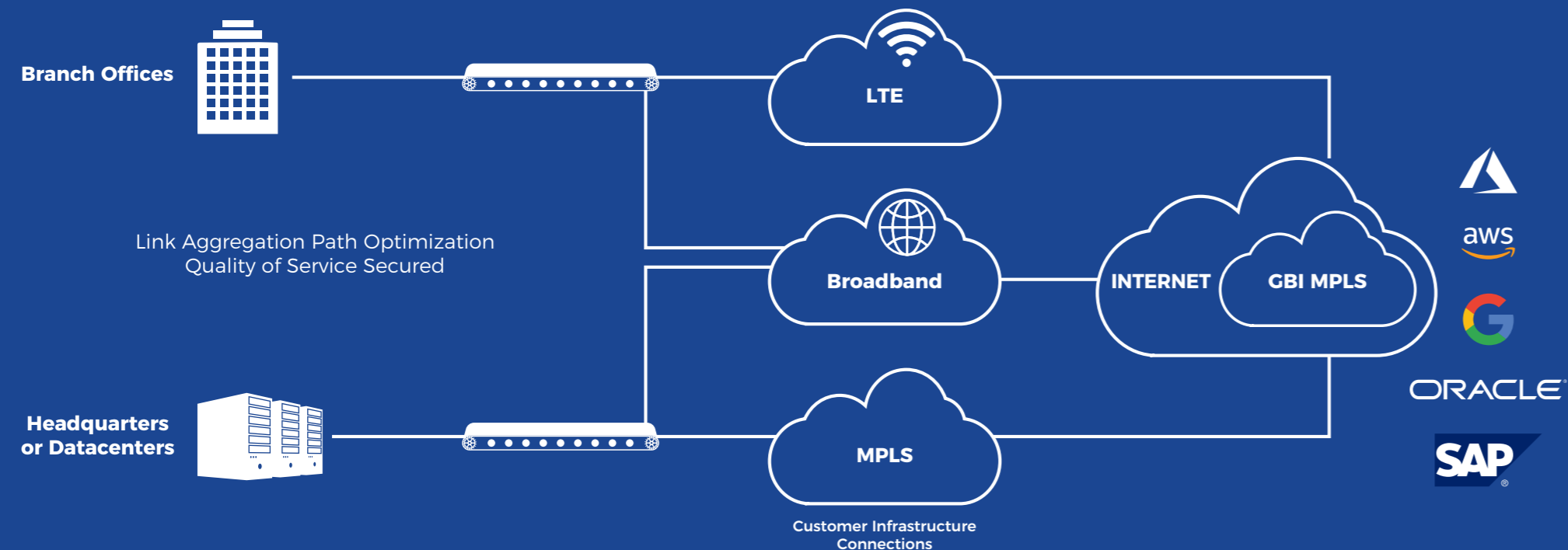
### Peace of Mind

A one-stop-shop solution as a licensed partner of the major cloud operators backed by strong SLAs for availability and Round Trip Delay.



GBI is partnered with **Microsoft, AWS, Google, Oracle, SAP**, among other major cloud providers

# Cloud Connect



Destination	RTD (ms)*
Europe	100 - 120
Asia (Singapore)	90
Gulf	10-30

\*Above RTD figures are based on calculation between GBI Global POPs and GCC POPs

Access Speeds	10Mbps to 10Gbps
Interfaces	Ethernet (FE/GE)
Availability	99.99%**

\*\*From GBI on-net demarcation points

01

## Speed

- Direct connectivity to our major Cloud partners
- Optimized routing via GBI's global MPLS POPs

02

## SLA

- Leading availability and latency guarantee
- Comprehensive SLA from the premises to the Cloud

03

## Service

- 24/7 Global NOC
- End to end service management and monitoring

04

## Technology

- GBI MPLS backbone
- Software Defined Wide Area Networking (SD-WAN)
- Enhanced security connection end to end

05

## Flexible Pricing

- Competitive pricing
- Lower cost compared to private leased lines

06

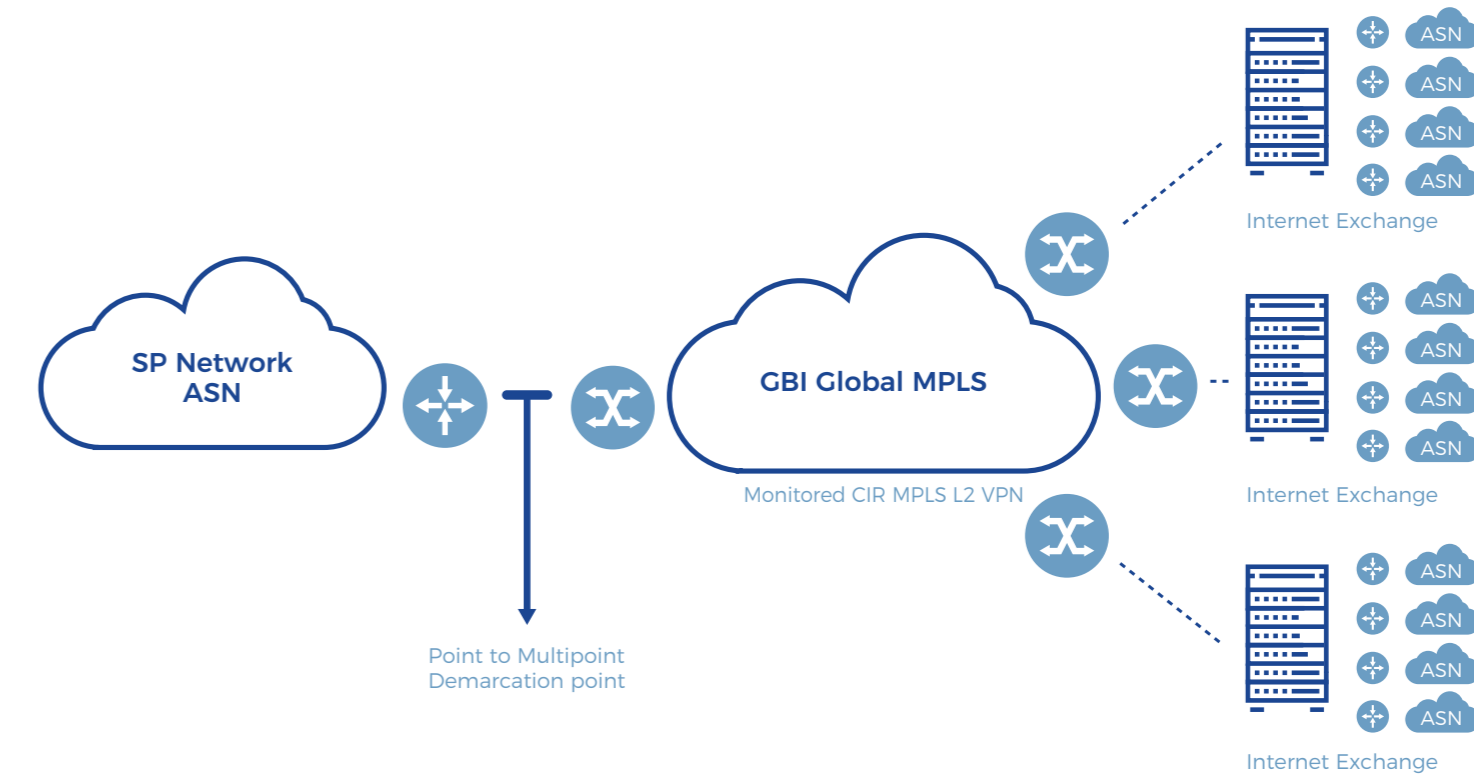
## Service scalability

- Next generation virtual cloud connectivity by connecting each single branch to the cloud directly
- Flexibility to add and remove branches without changing on enterprise network architecture



# IX - Connect

Point to Multipoint MPLS connection for remote presence at major Internet Exchanges



## Customer Requirement

- Improved peering connectivity across the world's largest IXs
- Minimise global infrastructure costs
- Agility to balance traffic to different destinations as per local internet use. Flexible connectivity to each IX from up to 100GB
- Fast Go-to-Market and IX provisioning

## GBI Solution Benefits

- A single port provision. No deployment or install required
- Low cost. Pay only for the CDR you need
- Single point of contact for Billing, Legal and Technical
- Flexible bandwidth arrangement between 1G to 10G to DE-CIX, AMS-IX, LINX, UAE-IX and SH-IX

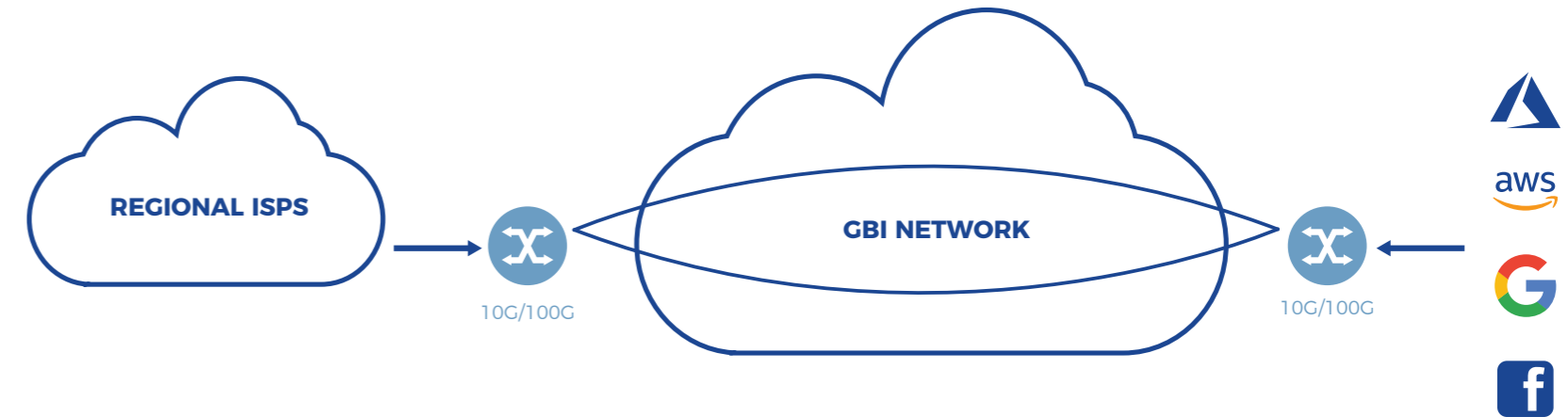
## GBI IX-Connect Services

IX-Connect is a point to multi-point ethernet over MPLS Service. The GBI Ethernet services portfolio comprises a range of carrier grade connectivity options across Europe, the Middle East, India and Singapore. Customers enjoy ultimate flexibility in choice of routes and latency backed up by a 99.99% availability SLA.

Flexible reach to major Internet Exchanges in across GCC, Europe and Asia Pac. through Point to Multipoint MPLS leveraging reseller partnerships between GBI and the major IXs. It will help the customers to have hassle-free remote presence and peering at desired Internet Exchanges with massive cost reduction.

# Content Connect

Capacity Service Wavelength 10G/100G Remote Peering with Content in the GCC and the Globe



## Challenges

- Reach to Content hosted in GCC for direct remote peering
- Reduce latency for direct peering in Europe and Asia
- Options for protection and diversity
- Wavelength from 10G to 100G
- Reduce cost for capacity to Europe and Asia

## GBI Solution Benefits

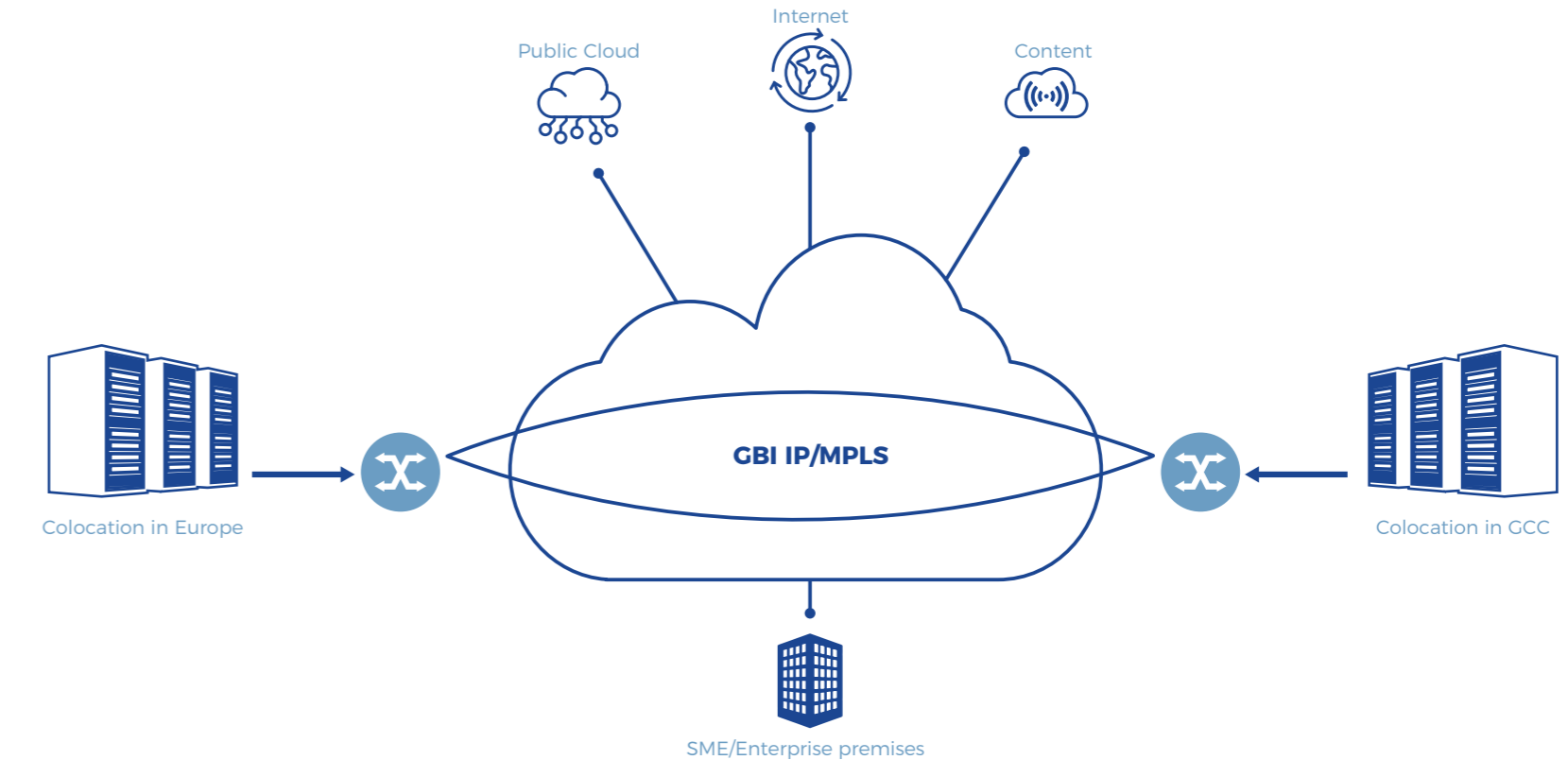
- Connections to all Datacenters in the GCC and hosted content
- 10G and 100G wavelength options
- Protected reach via GBI Gulf ring
- Neutral carrier for all ISPs in the region

## GBI Capacity Services

**GBI's award winning cable network** offers unparalleled connectivity across the Middle East and beyond. Our transmission options range from SDH to EoSDH and DWDM wavelengths.

- EPL and IPLC, up to 100GB
- Wavelength, 10G and 100G
- Access to the main DCs in the GCC, Europe and Asia
- Leverage different routes to reach the GCC from Europe, India and Singapore

# Managed Hosting Services



## Colocation

- ME or Europe
- Space and Power

## Connectivity

- Backup
- MPLS Backbone

## Content

- IPT/DIA
- Internet Exchange

## Services

- FLM
- 24x7 Support

## GBI Managed Hosting Services

- Rack space from 1 Unit to multiple racks
- Presence in Meeza Qatar, Datamena UAE, Equinix Germany and Telehouse UK
- AC power support from 250W to 4KW
- Bundled with choice of any or all IPT, DIA, MPLS ,IX peering and Cloud connectivity from GBI
- Full monitoring and FLM support • Optional managed lease devices
- All cross connections are included • 100MB till 10G connectivity options

# Professional Services



# Customer Challenges

Traffic rules management is crucial



Access control list sets are virtually unmanageable

Increasing complexity in network, demands a firewall to match



Manual processing requires security experts and long lead times

A new class of tools is emerging that allows network security policies



All of this generates a need for automation



**Change**



**Complexities**

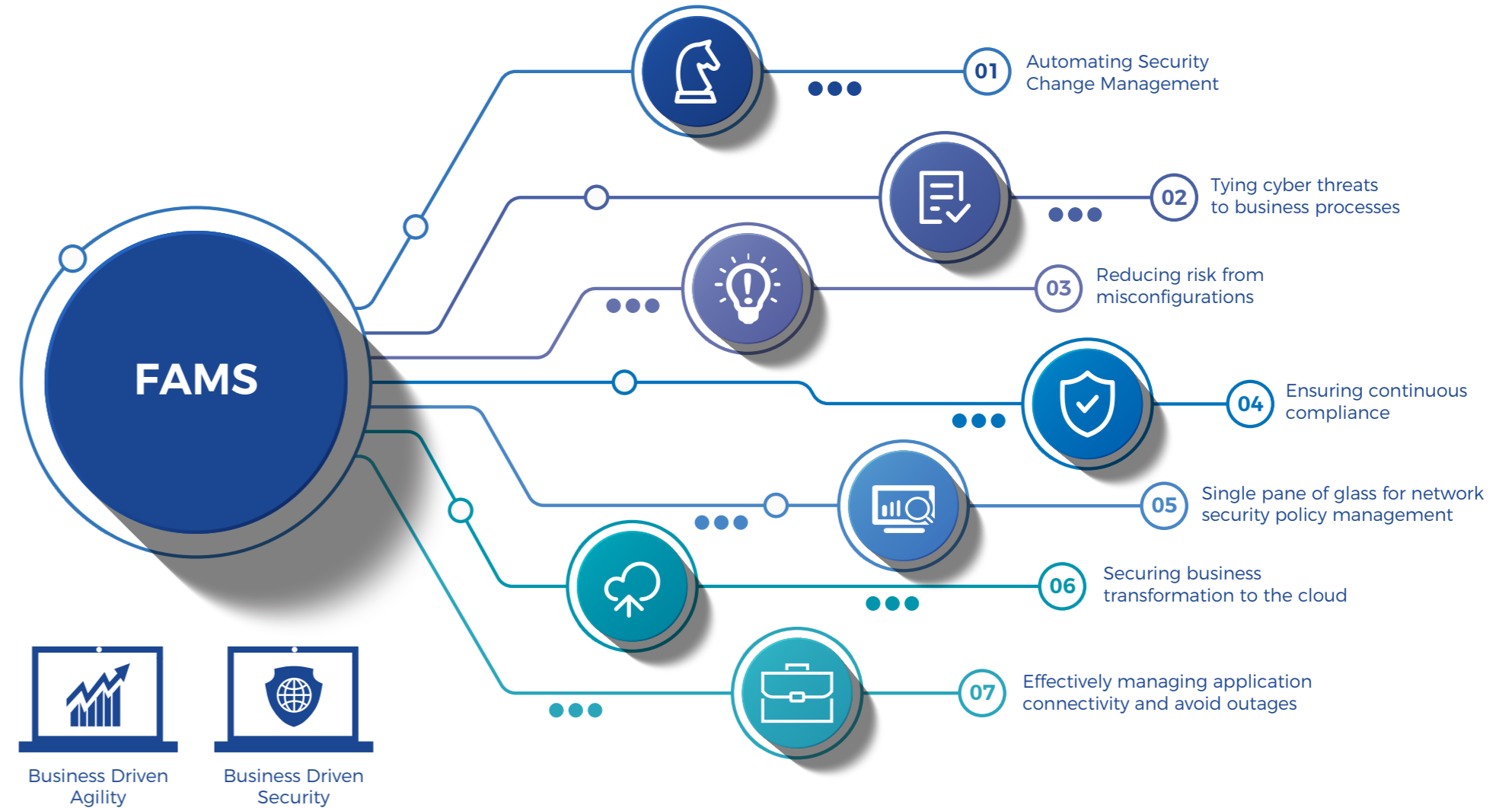


**Communication**

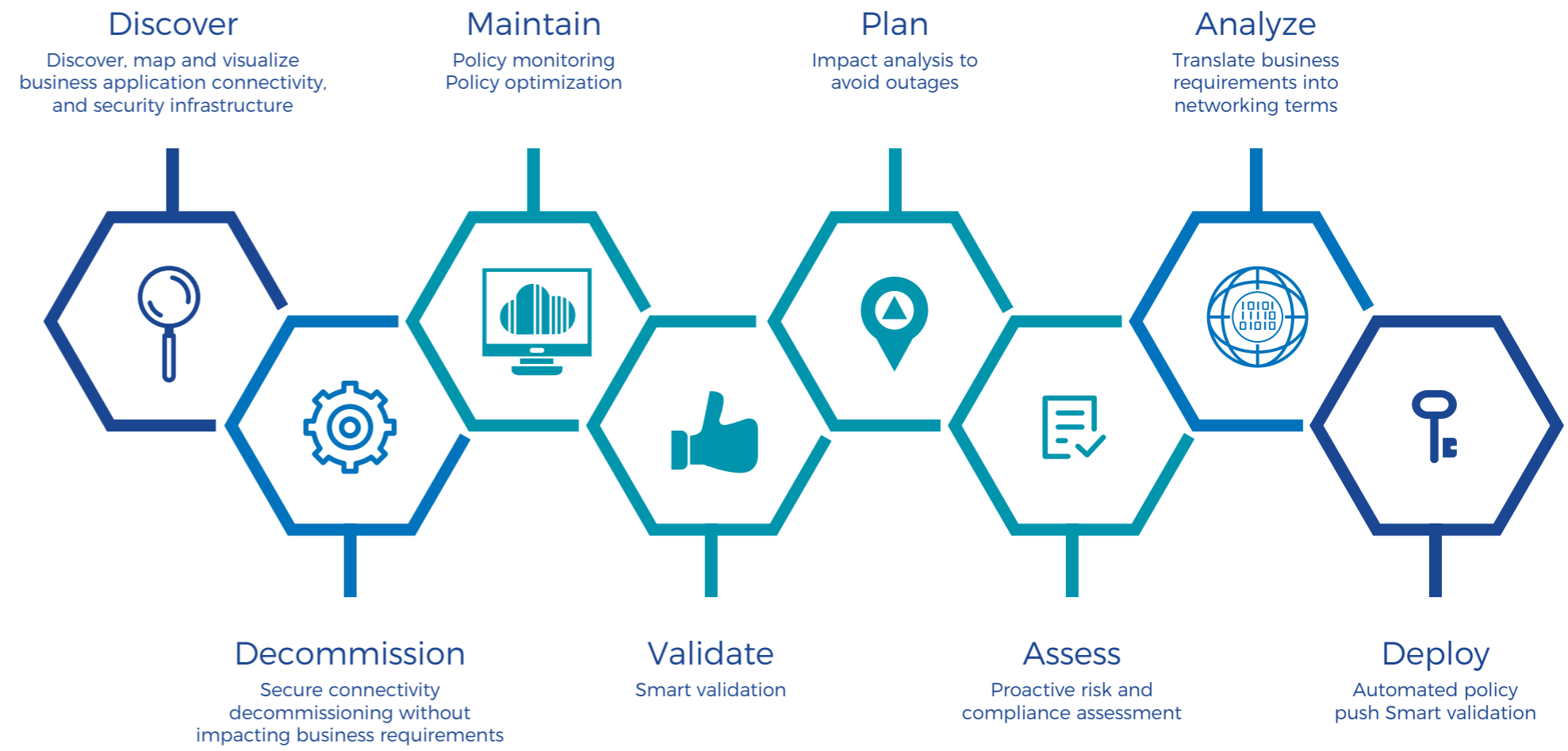


**Compliance**

# Firewall Assurance Management Service



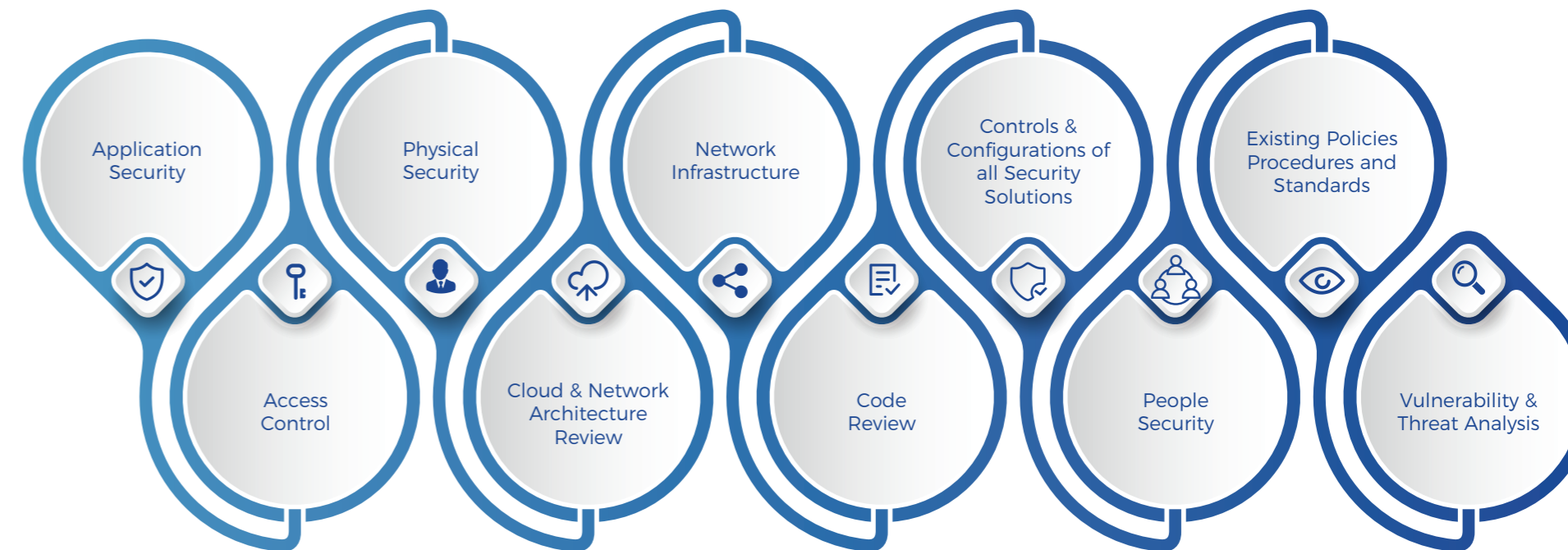
# FAMS – Security Policy Lifecycle Management



# Security Consulting

Current State Assessment (CSA) is the next generation security assessment service from GBI, which analyzes the end to end environment and provides higher visibility into their existing security posture

It provides macro view of environment and ensures all of the industry recommended security best practices are implemented, vulnerabilities are fixed, security controls are in alignment with policies, compliances, threat monitoring and ensure that management is effective

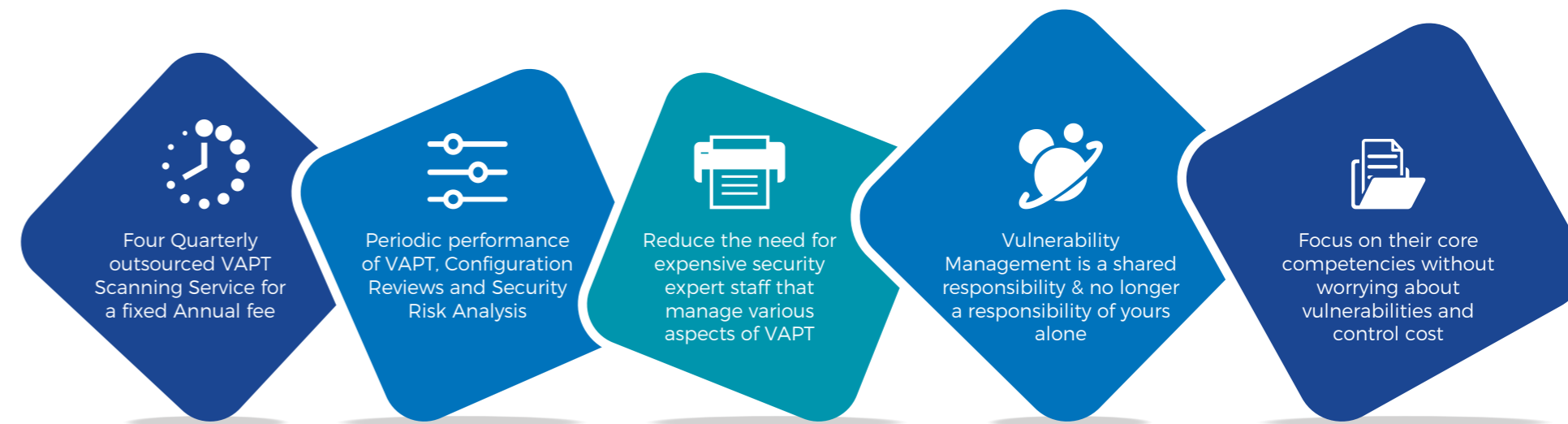




# Vulnerability Assessment & Penetration Testing

Vulnerability Assessment and Penetration Testing (VAPT) as an important Cyber Defense Technology. By using VAPT, we can **remove vulnerabilities from your system** and **reduce possibility of cyber-attack**.

GBI's VAPT is an **on-demand solution** which makes it convenient to run tests. It is a hybrid solution which blends **automated testing with security expert analysis**. This blended model provides the best quality test coverage while accelerating the test time. The unique technology identifies all possible attack vectors.



# Address:

**Gulf Bridge International  
Qatar Science & Technology Park Tech 1 Level 2  
Al Gharaffa Street, Al Rayyan  
P.O. Box 210153 Doha - Qatar**

**Telephone: +974 4009 4444**

**Fax: +974 4009 4443**

**Email: [Sales@gbiinc.com](mailto:Sales@gbiinc.com)**



